

Food

siegling belting



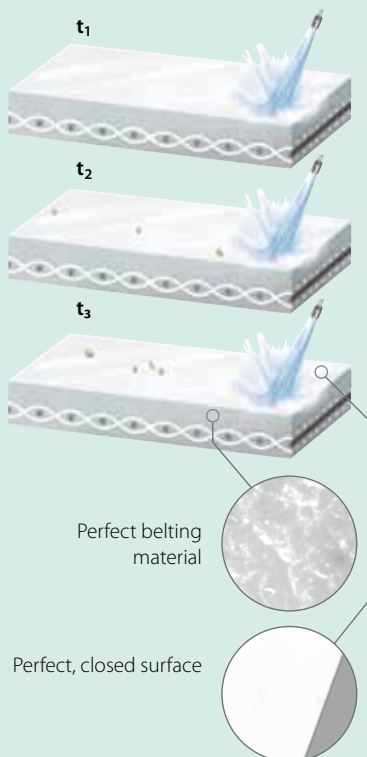
Siegling Transilon food belts For consistent support of your HACCP concept

As a leading manufacturer of conveyor and processing belts, Forbo Siegling knows all about the food industry's special requirements. Our food belts, tailor-made for this industry, are the result of close co-operation with manufacturers of machinery and food producers.

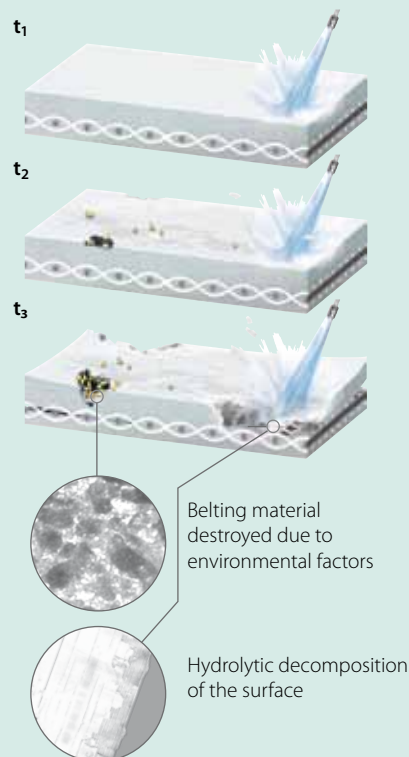
Consequently they're successfully used worldwide in all logistical processes when manufacturing food.

We'll support your HACCP concept reliably and in compliance with legal requirements. To do so, our food range – in particular the special HACCP types – provides a variety of special product characteristics and types. These elements put a stop to any potential safety risks in the manufacturing process.

Siegling Transilon HACCP belt



Standard conveyor belt



Siegling Transilon HACCP belt in comparison to a standard conveyor belt.

Influence of bacterial growth and hot water cleaning cycles on the condition of the belt or the way it functions depending on time [t].

Excellent resistance to hydrolysis

The HACCP types are resistant to hot water, cleaning agents and disinfectants. This allows many cleaning cycles to be carried out without risking delamination and/or destroying the top layer.

Blue a strong colour contrast

Blue does not occur in natural foodstuffs. This allows soiling to be recognised more easily and quickly on blue belts than on the traditional white used in the food industry. Blue belts are suitable for use in optical sorters. The reduced light reflection provides better and safer conditions to work in.

Good release properties

Because of their excellent release properties, all HACCP types are a great advantage when producing adhesive foodstuffs and particles from conveyed goods are easy to clean off.

The plastic modules have a special hinge mechanism, meaning that particles from conveyed goods can be rinsed out very easily.

Belt edge sealing optional

Penetration of oil, grease, water and bacteria is prevented around the belt edge. This increases the service life of the belt and reduces the risk of product contamination.

Certificates

All materials and feedstock used in the HACCP types comply with FDA 21 CFR as well as the (EU) 10/2011 and (EC) 1935/2004 regulations regarding the raw materials used and the migration thresholds. Depending on the type, individual products show further certification (NSF/Halal).



Content

Two product lines for the most varied of applications 4

Confectionery production, meat, poultry and seafood processing 6

Dairy industry, dough processing, agriculture, packaging 8

Siegling Transilon
Food product range 10
Application-driven details 14

Siegling Prolink
Food product range 16
Application-driven details 18

For further relevant Forbo Siegling products in the food industry please see the following brochures:

No.	Title
120	The new sidewall range
224	Siegling Transilon Conveyor and processing belts
228	Tobacco
317	Siegling Transilon Technical Information 1 Storage · Finishing · Fitting
318	Siegling Transilon Technical Information 2 Special features and properties
800	Siegling Prolink Modular belts



Forbo

MOVEMENT SYSTEMS

Two product lines for the most varied of applications

siegling transilon

conveyor and processing belts

Siegling Transilon plastic conveyor belts with fabric tension member

are safe, resistant to oil and grease and are EU and FDA compliant. The special HACCP types also provide an enormous hygiene benefit.

In the food segment, the majority of the Siegling Transilon PU- and PVC-types are certified as complying with Halal regulations by IFRC Asia (a member of the World Halal Council).

The properties

EU and/or FDA compliant

light/flexible material that can be processed

tension member for the application

dimensionally stable

light with low overall thickness

low elongation

The advantages

▶ all types are suitable for direct contact with foodstuffs

▶ individual design (e.g. surfaces, profiles, sidewalls)

▶ depending on application, stiff or flexible

▶ also for use where humidity and temperature fluctuates

▶ low energy consumption, very small drum diameters possible

▶ short take-up ranges possible

siegling prolink

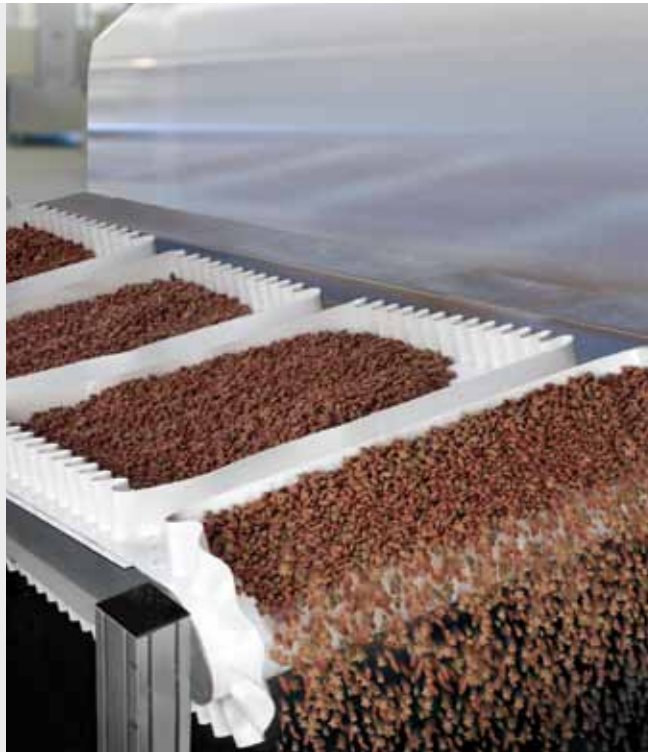
modular belts

Siegling Prolink plastic modular belts

are made of homogenous materials which are EU, FDA and USDA approved. The HACCP types also offer an extra hygiene benefit.

Series 6.1 and 10 are also NSF-certified. All Siegling POM Prolink types fulfil the requirements of the World Halal Council.





The properties

FDA, EU and/or USDA compliant



all types are suitable for direct contact to foodstuffs

homogenous material



closed surfaces

robust



also operates in extreme conditions

open design



easy to clean

rot-resistant



long service life

easy to fit



time and cost saving



Processing methods and conditions are as varied as the range of food consumed.

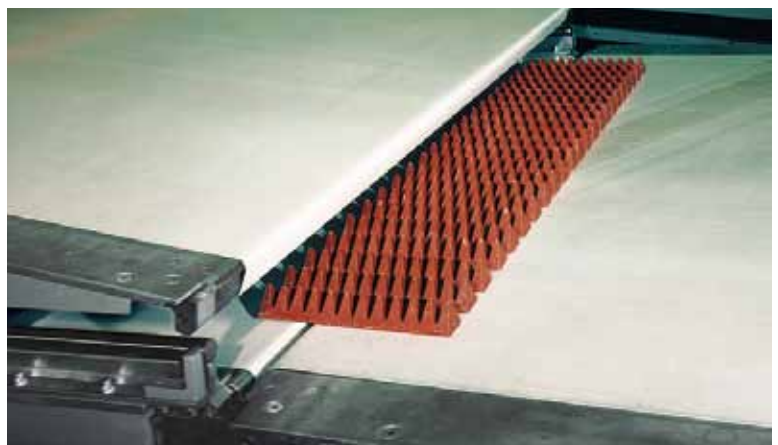
Apart from basic conveying Siegling Transilon conveyor and processing belts and Prolink modular belts are geared towards the special requirements of the different applications.

Confectionery production

Siegling Transilon belts, with patterned surfaces and belts with excellent release properties to sticky goods such as toffee or chewing gum, are the specialists in the confectionery industry.

Belts suitable for knife edges ($\varnothing \geq 6$ mm) with good thermal conductivity make cooling the hot chocolate on the cooling line quicker.

Cooling lines can be produced easily with Siegling Prolink modular belts that have low reversing radii ($\varnothing \geq 18$ mm) with a high level of permeability (series 4.1).



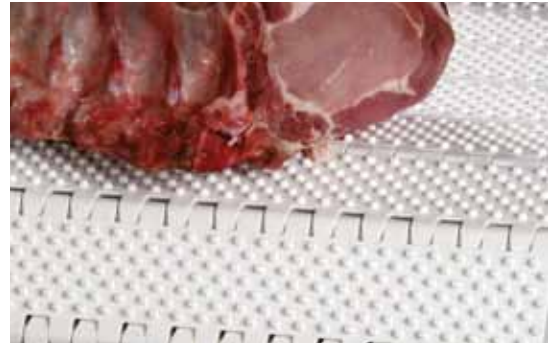
Meat, poultry and seafood processing

Siegling Transilon conveyor belts with resistant PVC surfaces are easy to clean with hot water and are extremely durable thanks to their excellent resistance to oil and grease. Cutting and chopping can be done on especially incision-resistant types.

Siegling Prolink modular belts which, even around the hinges, are easily to clean are particularly resistant towards incisions and scratches.

Siegling Transilon conveyor belts resistant to decay and rot remain dimensionally stable and flexible despite frequent cleaning. On and offshore they are used for conveying, skinning, filleting and freezing. Different patterns make inclined conveying without using additional profiles possible.

Siegling Prolink modular belts are excellent for deep freezing (depending on the material down to -70°C). The high level of permeability to water of certain modular types permits drainage required in production.



forbo

MOVEMENT SYSTEMS



Dairy industry

Dairy products “coagulate” placing high demands on belt hygiene and durability. Special PVC coated types fulfil these demands continually and reliably.

Incision-resistant surfaces allow portioning on the belt. Using special surfaces and dimensionally stable belt constructions make continuous conveying of the products possible.

Siegling Prolink modular belts guarantee hygienic conveying kind to packaging in the filling department.



Dough processing

In the modern bakery industry nearly all processing steps are carried out with conveyor and processing belts. Siegling Transilon processing belts shape the dough and convey it to the individual processing machines.

After baking, the products are cooled down on permeable Siegling Prolink modular belts ideal for the purpose. When using curved modules with high levels of permeability the cooling process is controlled ideally in cooling towers.

Elastic belts from our Siegling Extremultus range are used as spreading belts.

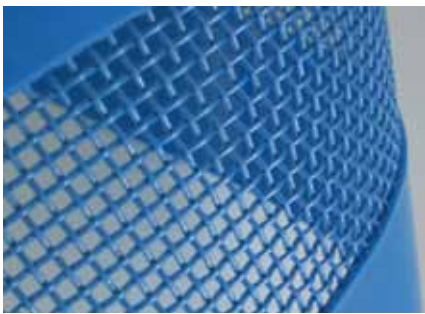




Agriculture

Siegling Transilon belts guarantee careful but at the same time quick conveying of fruit and vegetables during processing and so reduce the amount of time spent in production.

They are resistant to fruit acids and have long service lives – equipped with profiles and sidewalls, they are frequently used for inclined conveying.



Particularly during washing and drying cycles, the Siegling Prolink modular belts with open areas, or Siegling Mesh belts make the production process easier.

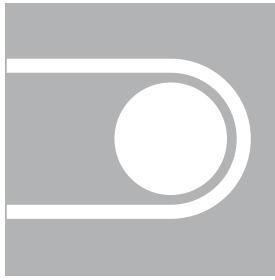
Packaging

Forbo Siegling supports efficient and safe packaging processes with a variety of special products:

- elastic belts with homogenous designs and easy-to-clean surfaces for use in packaging machinery for meat, fish, cheese and poultry;
- belts for use in high temperature areas as feeder and discharge belts for shrinkage tunnels;
- check-weigher belts with minimal fluctuations in the belt width and surface weight, combined with extremely precise splicing which makes using endless belts superfluous.



siegling transilon Food product range



Technical data, properties and recommendations		Article number	Certificates***	Antistatic	Belt edge sealing possible	Top face finish	Total thickness approx. [mm]	Weight approx. [kg/m ²]	Effective pull at 1% elongation (k _{1%} relaxed) [N/mm width]*	d _{min} approx [mm]**	Permissible operating temperature [°C]
Urethane											
E 2/1 U0/U2 HACCP	white	900176	E, F, H	●	●	0.2 mm Urethane	0.65	0.65	2.5	r 3	-30/+100
E 3/1 U0/U0	transparent	906430	E, F, H	●		Urethane impregnated	0.85	0.6	3	r 3	-30/+100
E 3/1 U0/U0	blue	906681	E, F, H	●		Urethane impregnated	0.9	0.7	3	r 3	-30/+100
E 3/1 U0/U2 HACCP	white	900006	E, F, H	●	●	0.2 mm Urethane	1.15	1.2	3.5	r 3	-30/+100
E 3/1 U0/U2 MT-C-HACCP	white	900008	E, F, H	●	●	0.2 mm Urethane	0.7	0.7	3.5	r 3	-30/+100
E 3/1 U0/U2 MT-NA-HACCP	white	900201	E, F, H		●	0.2 mm Urethane	0.8	0.9	3	r 3	-30/+100
E 3/1 U0/U2 MT-NA-HACCP-FF	blue	906662	E, F, H		●	0.2 mm Urethane	0.9	0.9	3	r 3	-30/+100
E 3/1 X0/U2D MT-HACCP-FF	white	906730	E, F	●	●	0.2 mm Urethane ³⁾	1.0	1.0	2.5	r 3	-20/+100
E 3/1 U0/U2 RF	brown	900007	E, F, H	●	●	0.2 mm Urethane	1.2	1.1	3.5	r 3	-30/+100
E 3/1 U0/U2 RFF-HACCP	white	906726	E, F, H	●	●	0.2 mm Urethane	1.15	1.1	3	r 3	-30/+100
E 3/1 U0/U3 SP-NA	amber	906733	E, F, H			0.3 mm Urethane	0.75	0.75	3	r 3	-30/+100
E 3/1 U0/U2 GL-NA	amber	900397	E, F, H		●	0.2 mm Urethane	0.8	0.8	3.5	r 3	-30/+100
E 3/1 U0/U2 RFF-NA	amber	900398	E, F, H			0.2 mm Urethane	0.8	0.8	3	r 3	-30/+100
E 3/2 U0/U0	transparent	900009	E, F, H	●	●	Urethane impregnated	1.2	1.1	5	r 3	-30/+100
E 3/2 U0/U2 HACCP	white	900103	E, F, H	●	●	0.2 mm Urethane	1.45	1.6	5.5	r 3	-30/+100
E 3/2 U0/U2 HACCP-FF	blue	906664	E, F, H	●	●	0.2 mm Urethane	1.45	1.6	5.5	r 3	-30/+100
E 4/2 U0/U0	transparent	900206	E, F, H	●	●	Urethane impregnated	1.1	1.1	3.5	r 3	-30/+100
E 4/2 U0/U0 HACCP-FF	blue	906723	E, F, H	●	●	Urethane impregnated	0.95	0.9	4	r 3	-30/+100
E 4/2 U0/U2 HACCP-FF	white	906645	E, F, H	●	●	0.2 mm Urethane	1.35	1.55	5.5	r 3	-30/+100
E 4/2 U0/U2 MT-HACCP	white	900207	E, F, H	●	●	0.2 mm Urethane	1.35	1.55	4	r 3	-30/+100
E 4/2 U0/U2 MT-HACCP-FF	blue	906663	E, F, H	●	●	0.2 mm Urethane	1.35	1.55	5.5	r 3	-30/+100
E 4/2 U0/U2 LF	white	906373	E	●	●	0.2 mm Urethane	1.35	1.5	4.5	r 3	-30/+100
E 4/H U8/U8 NP/MT-NA	blue	907139	E, F			0.8 mm Urethane	2.5	2.8	2	40	-30/+100
E 8/2 U0/U2 MT-NA	white	900277	E, F, H		●	0.2 mm Urethane	1.4	1.45	6.5	25	-30/+100
E 8/2 U0/U5 MT-HACCP	white	906692	E, F, H	●	●	0.5 mm Urethane	1.6	1.7	6	r 5	-30/+100
E 8/2 U0/U5 HACCP	white	906693	E, F, H	●	●	0.5 mm Urethane	1.6	1.7	6	r 5	-30/+100
E 8/2 U0/U8	transparent	900024	E, F, H	●	●	0.8 mm Urethane	2.0	2.2	7.5	30	-30/+100
E 8/H U0/U2 MT-HACCP	white	906451	E, F, H	●	●	0.2 mm Urethane	1.35	1.25	10	r 3	-30/+100
E 8/H U0/U2 MT-HACCP	blue	906473	E, F, H	●	●	0.2 mm Urethane	1.35	1.25	10	r 3	-30/+100
E 8/H U0/U5 NP-HACCP	white	906489	E, F, H	●	●	0.5 mm Urethane	1.6	1.65	10	r 3	-30/+100
E 8/H U0/U5 NP-HACCP	blue	906605	E, F, H	●	●	0.5 mm Urethane	1.6	1.65	10	r 3	-30/+100
E 8/H U2/U8 NP/MT-HACCP	blue	906604	E, F, H	●	●	0.2 mm Urethane	1.6	1.7	10	10	-30/+100
E 10/H X0/U2 MT-HACCP	transparent	906557	E, F, H	●	●	0.2 mm Urethane	1.25	1.15	9.5	r 3	-30/+100
E 12/2 U0/U0	transparent	900040	E, F, H	●	●	Urethane impregnated	1.4	1.4	11	60	-30/+100
E 18/H U0/U2 MT	white	906420	E, F, H	●	●	0.2 mm Urethane	1.75	1.75	21	20	-30/+100
UU 20U-NA FSTR/FSTR ²⁾	white	995385	E, F			Urethane	1.0	1.15	-	10	-20/+60
UU 20U-NA FSTR/NP ²⁾	blue	855590	E, F			Urethane	1.4	1.5	-	10	-20/+60
UU 20U GSTR/FSTR ²⁾	black/blue	855588	E, F	●		Urethane	1.1	1.15	-	10	-20/+60
UU 20U-NA FSTR/FSTR ²⁾	blue	855576	E, F			Urethane	1.0	1.15	-	10	-20/+60
UU 60U-NA FSTR/FSTR ²⁾	blue	855595	E, F			Urethane	1.6	1.65	-	20	-20/+60
Polyolefin											
E 4/2 A0/A2 MT-HACCP	white	906660	E, F	●	●	0.15 mm Polyolefin	1.3	1.15	5	10	-10/+60
E 10/2 E0/A4 TT	transparent	906652	E, F	●	●	0.4 mm Polyolefin	2.25	2	11	60	-10/+60
PVC											
E 2/2 0/V/0	white	906570	E, F, H	●	●	no coating	1.5	1.7	2	r 3	-10/+70
E 5/2 0/0	transparent	900104	E, H	●	●	no coating	1.45	1.5	1.5	20	-10/+70
E 8/2 U0/V4 MT	blue	906595	E, F, H	●	●	0.4 mm PVC	2.1	2.3	6	30	-10/+70
E 8/2 U0/V5 MT	white	900028	E, F, H	●	●	0.5 mm PVC	2.2	2.5	8	40	-10/+70
E 8/2 U0/V5 NP	white	900029	E, F, H	●	●	0.5 mm PVC	2.1	2.15	8	40	-10/+70
E 8/2 V5/V8 NP/MT	blue	906567	E, F, H	●	●	0.8 mm PVC	2.85	3.2	6	40	-10/+70
E 8/2 V7/V7 MT/MT-HACCP	white	906585	E, F, H	●	●	0.7 mm PVC	2.9	3.6	6	60	-10/+70
E 10/M V1/V10 MT ¹⁾	white	900092	E, F, H	●	●	1 mm PVC	2.85	3.3	6	60	-10/+70
E 12/2 U0/V20 MT-NA	white	900050	E, F, H		●	2 mm PVC	3.7	4.4	10	60	-10/+70
High Grip											
E 4/1 U0/R2 HACCP-FF	white	906665	E, F, H	●	●	0.2 mm HighGrip	1.15	1.15	3	r 3	-30/+100
E 4/2 U0/R2 HACCP-FF	white	906705	E, F, H	●	●	0.2 mm HighGrip	1.35	1.55	5	r 3	-30/+100
UR 20U GSTR/FSTR ²⁾	black/blue	855624	E, F	●		HighGrip	1.5	1.6	-	10	-20/+60

	Hardness of top face coating [Shore A]	Laterally stiff	Troughable	Suitable for curves	Suitable for knife edges	Good resistance to oil and grease	Incision resistant	Patterned surface	Good thermal conductivity	Good release properties	Plastic fasteners possible	Profiles on the top face possible
	85	●			●	●		●	●	●	●	●
	-	●			●	●		●		●	●	
	85	●			●	●			●	●	●	
	85	●	●	●	●	●		●	●	●	●	○
	85	●			●	●		●	●	●	●	○
	85	●			●	●		●	●	●	●	
	85	●			●	●		●	●	●	●	
	85	●			●	●		●	●	●	●	
	85	●		○	●	●		●	●	●	●	
	85	●			●	●		●	●	●	●	
	-	●			●	●		●	●	●	●	
	85	●			●	●		●	●	●	●	●
	85	●			●	●		●	●	●	●	●
	-	●			●	●		●	●	●	●	●
	-	●			●	●		●	●	●	●	○
	92	●			●	●		●	●	●	●	○
	92	●			●	●		●	●	●	●	○
	92	●			●	●		●	●	●	●	○
	85	●			●	●		●	●	●	●	○
	90	●	●		●	●		●	●	●	●	○
	85	●			●	●		●	●	●	●	●
	92	●			●	●	●	●	●	●	●	● ⁴⁾
	85	●			●	●	●	●	●	●	●	● ⁴⁾
	85	●			●	●	●	●	●	●	●	● ⁴⁾
	85	●	●		●	●		●	●	●	●	●
	85	●	●		●	●		●	●	●	●	●
	85	●	●		●	●		●	●	●	●	●
	85	●	●		●	●		●	●	●	●	●
	85	●	●		●	●		●	●	●	●	●
	85	●	●		●	●		●	●	●	●	●
	85	●	●		●	●		●	●	●	●	●
	85	●	●		●	●		●	●	●	●	●
	85	●	●		●	●		●	●	●	●	●
	-	●			●	●		●	●	●	●	●
	85	●	●		●	●		●	●	●	●	● ⁴⁾
	-	●	●		●	●		●	●	●	●	●
	-	●	●		●	●		●	●	●	●	●
	-	●	●		●	●		●	●	●	●	●
	95	●	●		●	●		●	●	●	●	●
	92				●	●		●	●	●	○	
	90		●		●	●		●	●	●	○	
	-		●					●	●	●	●	●
	-		●	●				●	●	●	●	●
	72	●				●		●	●	●	●	●
	65	●				●		●	●	●	●	●
	65	●				●		●	●	●	●	●
	72	●				●	●	●	●	●	●	●
	65	●				●		●	●	●	●	●
	55	●	●	●		●	●	●	●	●	●	● ⁴⁾
	65	●				●	●	●	●	●	●	● ⁴⁾
	55	●			●			●	●	●	○	
	76	●			●			●	●	●	●	
	-		●					●	●	●	●	

siegling transilon

conveyor and processing belts

Please note: the values stated are nominal and can fluctuate in a belt whose width is a result of production processes. Our products are constantly adapted to market requirements. Consequently, changes in technical parameters can occasionally occur. **Therefore, please see the current product data sheets for specific information on designs and calculations.**

* Established in line with ISO 21181:2005
 ** The smallest permissible drum diameters were established at room temperature with z-splices and counter bending and do not apply to conveyor belts with mechanical fasteners. Lower temperatures, profiles and side walls can require larger drum diameters. On this point, see our brochure "Technical information 2" (ref. no. 318). r3, r5 or r10 on the other hand, state the radius of a knife edge.

*** E = (EU) 10/2011 and (EC) 1935/2004, F = Food and Drug Administration, H = Halal certified

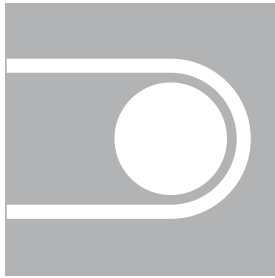
- 1) Also available in blue.
- 2) Elastic belt (Siegling Extremultus type)
- 3) High release
- 4) Particularly suitable for sidewalls

- = Yes
- = On request

- C = Laterally flexible, suitable for curved belts
- HACCP = Supports the HACCP concept
- LF = Exceptionally low friction
- NA = Non antistatic
- FSTR = Fine pattern
- GSTR = Coarse pattern
- GL = Smooth
- MT = Matt surface
- NP = Inverted pyramid pattern
- RFF = Flat and fine rhomboid pattern
- RF = Fine rhomboid pattern
- SP = Star pyramid pattern
- TT = Tobacco type (suitable for the tobacco industry)
- FF = Frayfree

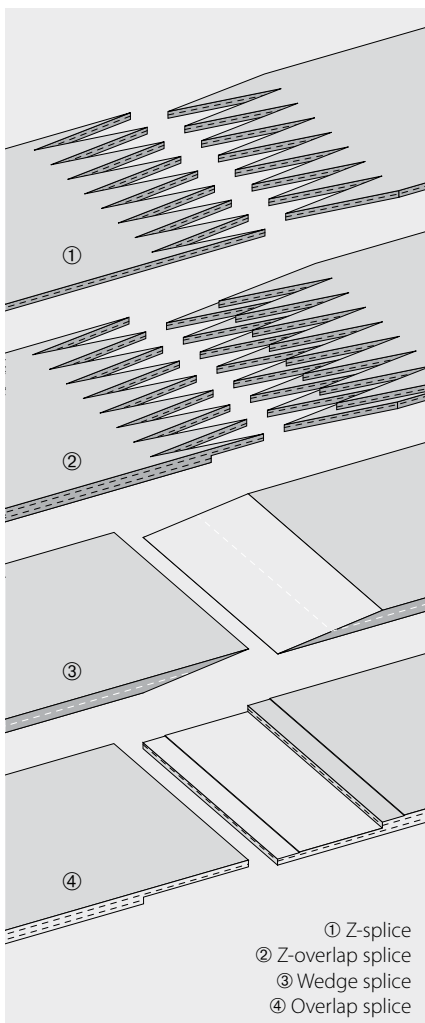


siegling transilon Food product range



Technical data, properties and recommendations		Article number	Certificates***	Antistatic	Belt edge sealing possible	Top face finish	Total thickness approx. [mm]	Weight approx. [kg/m ²]	Effective pull at 1% elongation (k _{1%} relaxed) [N/mm width]*	d _{min} approx [mm]**	Permissible operating temperature [°C]
Silicone											
E 3/1 U0/S3	white	900184	E, F	●		0.3 mm Silicone	1.1	1.05	3	r 3	-30/+100
E 3/1 U0/S3	blue	906760	E, F	●		0.3 mm Silicone	0.9	0.9	2	r 3	-30/+100
E 4/2 S0/S0	transparent	900135	E, F	●		Silicone impregnated	1.3	1.1	4	40	-40/+180
E 4/2 S0/S3 FSTR	white	900136	E, F	●		0.3 mm Silicone	1.5	1.6	4	40	-40/+180
E 6/2 U0/U/S3	white	906477	E, F	●	●	0.3 mm Silicone	1.6	1.8	5	20	-30/+100
E 8/H S0/S5 MT-HACCP	white	906478	E, F	●	○	0.5 mm Silicone	1.4	1.5	8	40	-40/+180
Cotton/Non-woven											
E 2/2 U0/U0	transparent	906735	E, F, H	●	●	Polyester	1.1	1.2	3	r 3	-30/+100
E 3/2 U0/U/C fine	white	999638	E	●	●	Cotton	1.4	1.4	2.5	r 3	-10/+100
E 3/2 U0/U/C coarse	transparent	906667	E, F	●	●	Mixed fabric	2	1.7	2.5	r 3	-30/+100
NOVO 25-NA	white	996160	E			Polyester felt	2.5	1.3	7	40	-10/+120
Polyester											
E 12/2 E0/E3 MT-TT	transparent	900348	E, F	●	●	0.3 mm Polyester	1.7	1.8	10.5	50	-30/+100

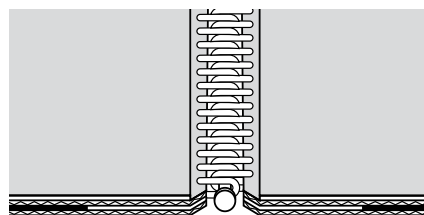
Types of splice



Plastic fasteners

- Plastic fasteners are EU and FDA compliant
- Belts can be quickly and easily exchanged
- Plastic fasteners are suitable for use in metal detectors

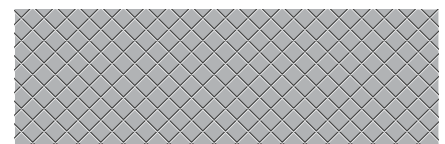
Plastic fasteners are also available for embedded in the belt coating or heated on.



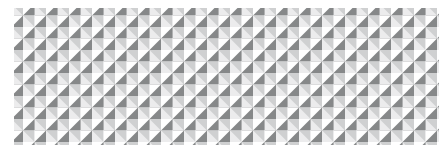
Surface patterns

Special surface patterns can optimise grip and release properties for many products and emboss the under side of the goods conveyed (e.g. in chocolate).

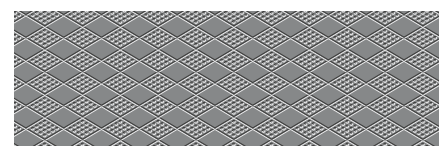
Any customised embossing is possible. Please enquire.



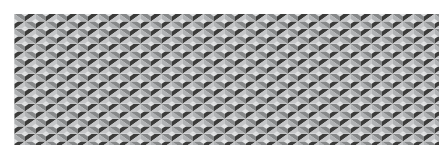
Fine pattern (FSTR)



Inverted pyramid pattern (NP)



Flat and fine rhomboid pattern (RFF)



Fine rhomboid pattern (RF)

	Hardness of top face coating [Shore A]	Laterally stiff	Troughable	Suitable for curves	Suitable for knife edges	Good resistance to oil and grease	Incision resistant	Patterned surface	Good thermal conductivity	Good release properties	Plastic fasteners possible	Profiles on the top face possible
	30	●			●	●			●	●	●	
	30				●	●			●	●		
	-	●						●		●		
	30	●				●		●		●		
	30	●				●				●	●	
	60		●			●		●	●	●	●	
	-	●			●	●				●	●	
	-		●		●	●		●		●	●	
	-		●		●	●		●		●	●	
	-			●		●	●	●		●	●	
	92		●			●	●	●		●	●	●

Siegling Transilon is supplied as

- endless belts
- belts prepared for hot or cold-pressing on site
- roll material for independent belt fabrication
- belts with mechanical fasteners
- belts with sealed edges (Smartseal)
- belts with profiles welded on (longitudinal, lateral, diagonal, half-round)
- belts with sidewalls
- belts with perforations
- special designs with metal eyelets, impulse foils, special markings, etc.

Certificates

FDA/EU

All materials and feedstock used in the HACCP types comply with FDA 21 CFR as well as the (EU) 10/2011 and (EC) 1935/2004 regulations regarding the raw materials used and the migration thresholds.

Halal

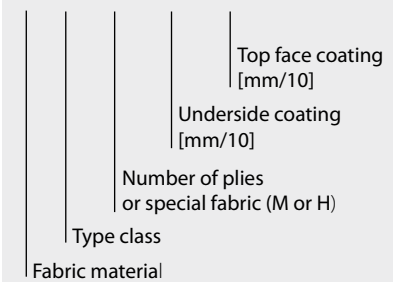
In the food segment, the majority of the Siegling Transilon PU- and PVC-types are certified as complying with Halal regulations by IFRC Asia (a member of the World Halal Council).

siegling transilon

conveyor and processing belts

Type designation for Siegling Transilon

E 8 / 2 U0 / V5
E 10 / M V1 / V10



* Established in line with ISO 21181:2005

** The smallest permissible drum diameters were established at room temperature with z-splices and counter bending and do not apply to conveyor belts with mechanical fasteners. Lower temperatures, profiles and side walls can require larger drum diameters. On this point, see our brochure "Technical information 2" (ref. no. 318). r3, r5 or r10 on the other hand, state the radius of a knife edge.

*** E = (EU) 10/2011 and (EC) 1935/2004, F = Food and Drug Administration, H = Halal certified

1) Also available in blue.

2) Elastic belt (Siegling Extremultus type)

3) High release

4) Particularly suitable for sidewalls

● = Yes

○ = On request

C = Laterally flexible, suitable for curved belts

HACCP = Supports the HACCP concept

LF = Exceptionally low friction

NA = Non antistatic

FSTR = Fine pattern

GSTR = Coarse pattern

GL = Smooth

MT = Matt surface

NP = Inverted pyramid pattern

RFF = Flat and fine rhomboid pattern

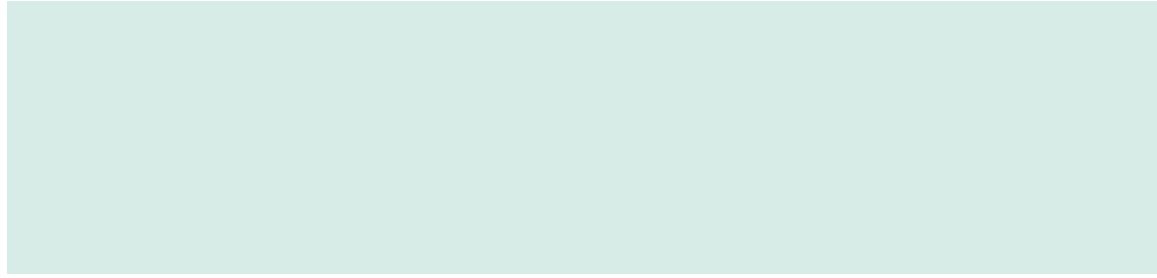
RF = Fine rhomboid pattern

SP = Star pyramid pattern

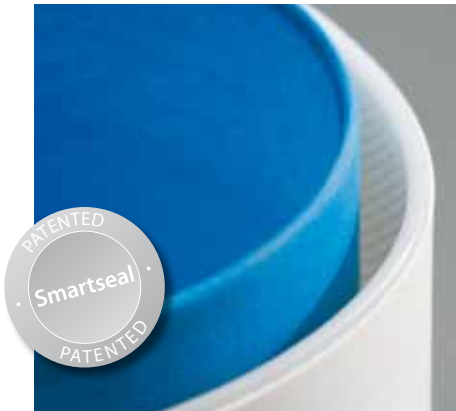
TT = Tobacco type (suitable for the tobacco industry)

FF = Frayfree

siegling transilon Application-driven details

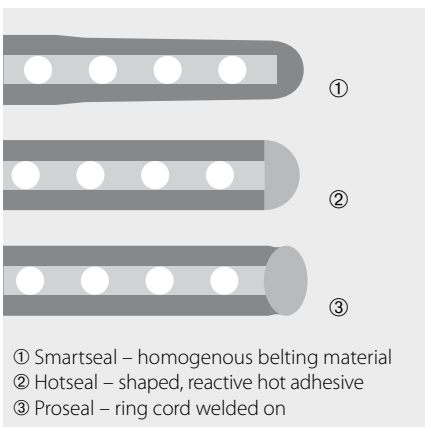


Belt edge sealing



Prevents penetration of oil, grease and water and therefore bacteria to the belt edge. This also increases the belt's service life.

A closed belt edge is possible by applying different types of belt edge sealing to conveyor belts made of synthetic materials that have fabric tension members.



All standard types of splice can be used for Siegling Transilon belts with belt edge sealing.

Fullseal



Fullseal belt types have a special construction that prevents belt edges from fraying. Fullseal combines the hygiene benefits of homogeneous urethane belts with the mechanical properties of belts with fabric tension members.

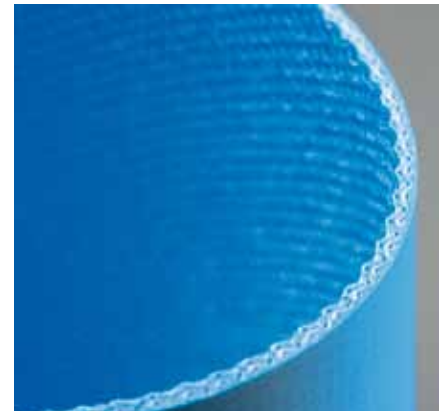
Longitudinal cuts between warp threads only separate the PU material and allow a closed belt edge. As a result, fluids are prevented from penetrating the belt.

Fullseal is ideal for use in particularly hygiene-critical applications (such as dairy products, dough processing, meat and poultry production).

Excellent release properties

Due to their excellent release properties, all HACCP types are a huge advantage when producing adhesive foodstuffs. Forbo Siegling also offers belts with special surface finishes for conveying products that have a tendency to stick. They have extremely good release characteristics where particularly sticky products like dough, caramel or other confectionery are concerned. They offer a high standard of hygiene and are easy to clean.

Frayfree



Frayfree is a new belt design that keeps fraying belt edges to a minimum. A special type of fabric, a special weave and enhanced fibre length improve the grip of the fibres in the fabric composite. Advanced production technology also ensures reliable bonding of each of the fibres to the coating material.

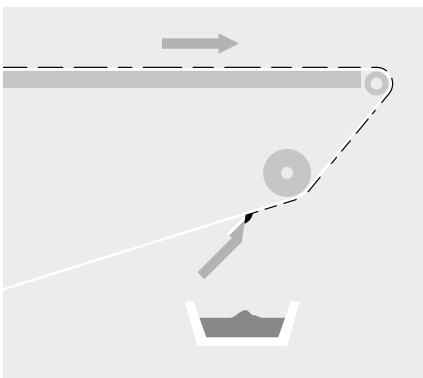
Frayfree belts are superb for conveying packaged and unpackaged food, for example confectionery and baked goods.

Belt scrapers

Different grades of hard urethane are combined to make robust, stiff scrapers. Therefore, the scraper is very inherently stiff and can often be used without any additional support. The extremely elastic scraper lip lies very evenly over the entire width of the belt.

Consequently they have significant advantages compared with conventional metal scrapers:

- the belt and the scraper last much longer
- scraping is better
- they are up to four times more robust than UHMW scrapers
- they are easier to clean

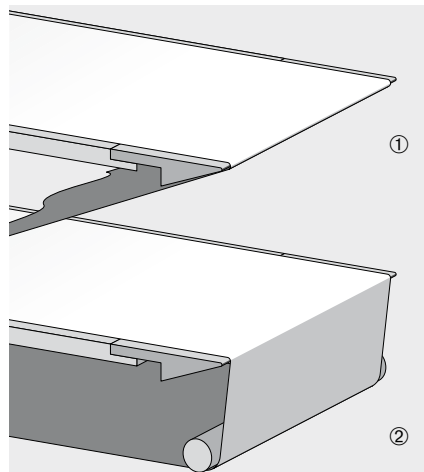


Suitability for knife edges

For certain applications, e.g. cooling lines, belts suitable for knife edges are required in order to transfer even the smallest of goods reliably to the next belt.

Siegling Transilon knife edge belts are suitable for the smallest of knife edge radii – special types also for use in curves and merges.

Because the belts are absolutely flat even light goods stay in the right position in long conveyor belts.



When rotating around the knife edge the power consumption of the belt (see ①) increases.

To keep this low the belt wrap should be kept as small as possible (see ②).

Profiles and sidewalls

Conveyor belts equipped with sidewalls are used in inclined and steep conveying for bulky goods and small component goods. Profiles are available in different types and dimensions and can be supplied as roll material.

Sidewalls, often in conjunction with lateral profiles, are used for closing up the sides when conveying bulky goods.

Forbo Siegling's sidewall range provides much greater food safety and new options for more compact conveyor designs.



siegling prolink Food product range



Application

Module types

Series 1

Pitch 50 mm (2 in)*

Medium to heavy-duty belt for industrial conveying applications.

S1-0 FLT
S1-18 FLT
S1-0 NSK

Closed, smooth surface
Open, smooth surface
Closed surface and anti-skid pattern
Closed surface and friction top

S1-0 FRT

Series 2

Pitch 25 mm (1 in)*

Light-duty belt for food and container handling and for light industrial applications.

S2-0 FLT
S2-12 FLT
S2-57 GRT

Closed, smooth surface
Open, smooth surface
Large open area, lattice-shaped surface
Large open area, raised ribs for transfer processes
Closed surface, friction top

S2-57 RRB

S2-0 FRT

Series 3

Pitch 50 mm (2 in)*

Medium-duty belt for food and non-food applications. Easy-to-clean, open-hinge design.

S3-0 FLT
S3-16 FLT
S3-0 LRB
S3-16 LRB

Closed, smooth surface
Open, smooth surface
Closed, with lateral ribbing
Open, with lateral ribbing

Series 4.1

Pitch 14 mm (0.55 in)*

Light to medium-duty belt for food and non-food applications. Small pitch allows tight product transfers, including nose bars.

S4.1-0 FLT
S4.1-0 NPY

Closed, smooth surface
Closed surface, with inverted pyramid pattern

S4.1-0 FRT1
S4.1-21 FLT
S4.1-21 NTP

Closed, friction top
Open, smooth surface
Open, with round studs



Certified

Series 6.1

Pitch 50 mm (2 in)*

Medium-duty belt designed specifically for demanding applications in meat, poultry and seafood processing, including cutting, de-boning and skinning lines. Easy-to-clean, open hinge design.

S6.1-0 FLT
S6.1-0 NTP
S6.1-0 CTP
S6.1-23 FLT

Closed, smooth surface
Closed, with round studs
Closed, with pointed studs
Open, smooth surface

Series 8

Pitch 25.4 mm (1 in)

Medium to heavy-duty belt for industrial applications.

S8-0 FLT
S8-0 NSK
S8-25 RAT
S8-0 FRT1

Closed, smooth surface
Closed surface, with anti-skid pattern
Open surface, with rounded contact surfaces
Closed, friction top



Certified

Series 10

Pitch 25.4 mm (1 in)






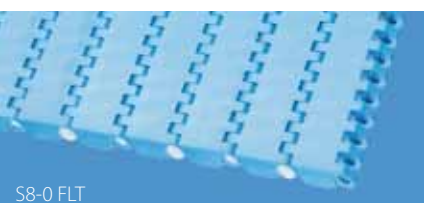

Light to medium-duty belt for products in hygiene-sensitive applications.

S10-0 FLT
S10-22 FLT

Closed, smooth surface
Open, smooth surface

siegling prolink

modular belts

	Materials**	Colours (standard)**	Pitch [mm (in)]*
 S1-0 FLT	PE, PP, POM, POM-HC	AT, WT	50 (2)
 S2-0 FLT	PE, PP, POM, PA 6.6-HT	BL, WT	25 (1)
 S3-0 FLT	PE, PP, POM	WT	50 (2)
 S4.1-0 FLT	PE, PE (R8), PP, PP (R7), POM, POM (R6)	BL, BL (BK), WT, WT (BK)	14 (0.55)
 S6.1-0 FLT	PE, PP, POM, POM-CR	LB, WT	50 (2)
 S8-0 FLT	PP, PP (R7), POM, POM (R6), POM-CR, PXX-HC	AT, BL, BL (BK), BK, LG, LG (BK), WT	25.4 (1)
 S10-0 FLT	PE, PP, POM	LB, WT	25.4 (1)

The Siegling Prolink series have been designed to handle a variety of conveying and processing jobs. Detailed information is included in the Siegling Prolink overview of the range (ref. no. 800).

We can send data sheets and further technical information on request.

* All imperial measurements have been rounded up.

** Not all materials are available in all colours.

- CTP** = Cone top
- FLT** = Flat top
- FRT1** = Friction top, Design 1
- GRT** = Grid top
- LRB** = Lateral rib
- NPY** = Inverted pyramid
- NSK** = Non skid
- NTP** = Nub top
- RAT** = Radius top
- RRB** = Raised rib

- PA 6.6-HT** = Polyamide high temperature
- PE** = Polyethylene
- POM** = Polyoxymethylene (Polyacetal)
- POM-CR** = POM cut resistant
- POM-HC** = POM highly conductive
- PP** = Polypropylene
- PXX-HC** = Self-extinguishing highly conductive material
- R6** = TPE 63 Shore A, POM
- R7** = TPE 50 Shore A, PP
- R8** = TPE 55 Shore A, PE

- AT** = Anthracite
- BL** = Blue
- BK** = Black
- LB** = Light blue
- LG** = Light grey
- WT** = White



MOVEMENT SYSTEMS

siegling prolink Food product range



Application

Module types

Series 5

Pitch 25 mm (1 in)*

Medium-duty radius and spiral belt with stainless steel hinge pins. Exceptionally strong and versatile curved belt with large open area.

S5-45 GRT
S5-45 GRT G
S5-45 NTP

S5-45 FRT
S5-45 GRT ST

Lattice shaped, large open area
 Guided side module
 Very large open area, lattice shaped with round studs
 With friction top
 Reinforced type

Series 9

Pitch 50 mm (2 in)*

Heavy-duty radius and spiral belt with stainless steel hinge pins. Exceptionally strong and versatile curved belt with large open area.

S9-57 GRT
S9-57 GRT G
S9-57 NTP

S9-57 GRT
F2, F3, F4, F5,
F6, F7, F8

Lattice shaped, large open area
 Guided side module
 Very large open area, lattice shaped with round studs
 Enhanced to handle large curve radii

Application-driven details

HACCP types

Series 4.1, 6.1 and 10 in particular support your HACCP concept with a number of hygiene-friendly characteristics.

These features include:

- an easy-to-clean design with wide channels underneath the module
- optimum resistance to hydrolysis
- good release characteristics
- blue as a strong contrasting colour

Certificates

FDA/EU

Siegling Prolink modular belts made of PE, PP and POM comply with FDA 21 CFR as well as the (EU) 10/2011 and (EC) 1935/2004 regulations regarding the raw materials used and the migration thresholds.

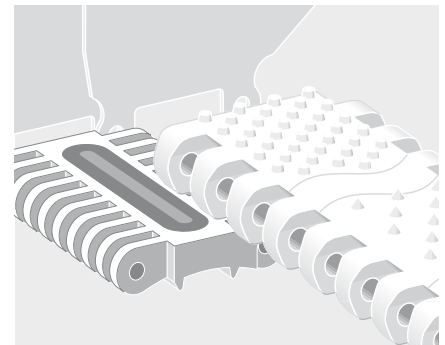
NSF

Prolink series 6.1 and 10 are NSF-certified in line with the NSF/ANSI 14159-3 standard.

Halal

All Siegling POM Prolink modular belts are certified as being compliant with the Halal regulations by IFRC Asia (member of the World Halal Council).

Patterns/grips



Patterns and grips can be applied to Prolink modules, modified to suit the consistencies of the products conveyed, in order to ensure reliable grip in inclined or stop-and-go conveying.

The following types are available:

- round studs
- pointed studs and
- Friction Top inserts

siegling prolink

modular belts

Materials**

Colours (standard)**

Pitch [mm (in)]*

PE,
PP,
POM

DB,
WT

25
(1)

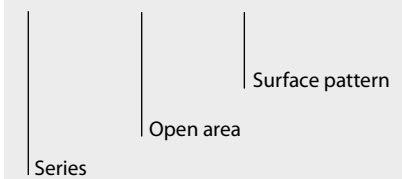
PE,
PP,
POM

LG,
WT

50
(2)

Type designation for Siegling Prolink (simplified)

S4.1 **0** **FLT**
S5 **45** **GRT**
S3 **0** **FLT**



S5-45 GRT

S9-57 GRT

* All imperial measurements have been rounded up.

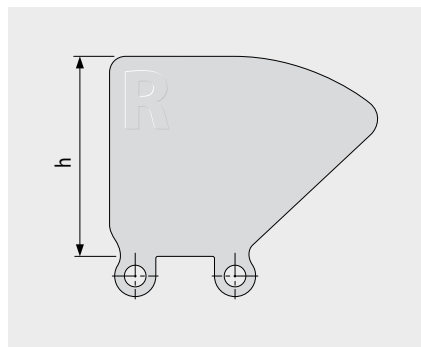
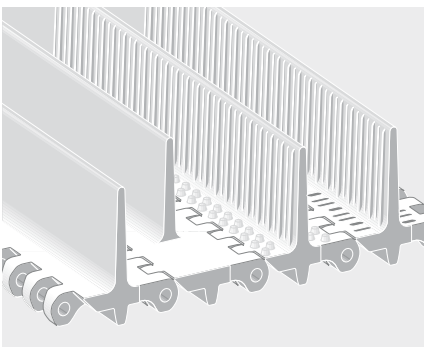
** Not all materials are available in all colours.

- CTP** = Cone top
- FLT** = Flat top
- FRT1** = Friction top, Design 1
- GRT** = Grid top
- LRB** = Lateral rib
- NPY** = Inverted pyramid
- NSK** = Non skid
- NTP** = Nub top
- RAT** = Radius top
- RRB** = Raised rib

- PA 6.6-HT** = Polyamide high temperature
- PE** = Polyethylene
- POM** = Polyoxymethylene (Polyacetal)
- POM-CR** = POM cut resistant
- POM-HC** = POM highly conductive
- PP** = Polypropylene
- PXX-HC** = Self-extinguishing highly conductive material
- R6** = TPE 63 Shore A, POM
- R7** = TPE 50 Shore A, PP
- R8** = TPE 55 Shore A, PE

- AT** = Anthracite
- BL** = Blue
- BK** = Black
- LB** = Light blue
- LG** = Light grey
- WT** = White

Profiles and side guards



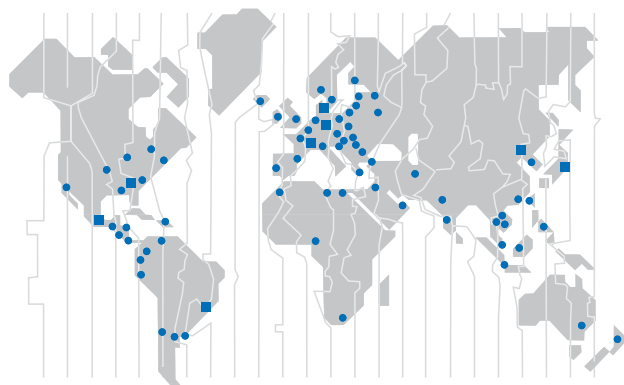
Prolink modules with profiles are used for inclined and steep conveying of bulk and small goods. Profiles are available in various shapes, dimensions and with different surfaces.

Side guards are used to keep bulk goods from falling off at the sides during conveying.

Siegling – total belting solutions

Committed staff, quality-orientated organisation and production processes ensure the constantly high standards of our products and services. The Forbo Siegling Quality Management System is certified in accordance with DIN EN ISO 9001.

In addition to product quality, environmental protection is an important corporate goal. Early on we also introduced an environmental management system, certified in accordance with ISO 14001.



Forbo Siegling Service – anytime, anywhere

In the company group, Forbo Siegling employs more than 1800 people worldwide. Our production facilities are located in nine countries; you can find companies and agencies with stock and workshops in more than 50 countries. Forbo Siegling service centres provide qualified assistance at more than 300 locations throughout the world.